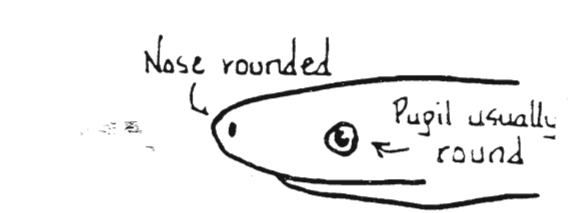
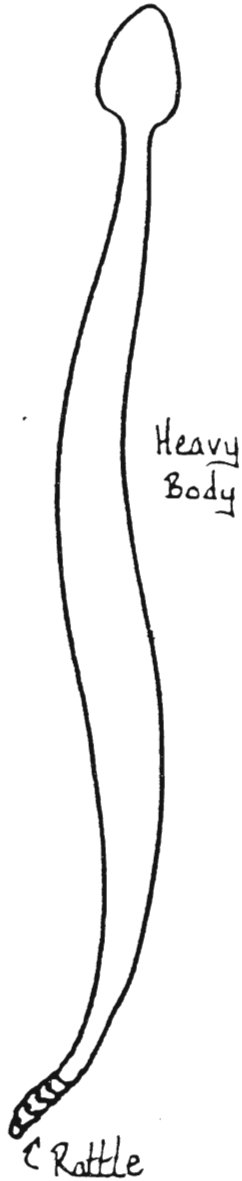
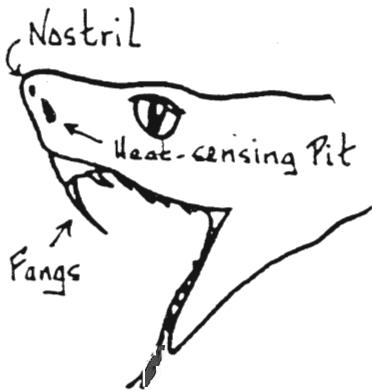
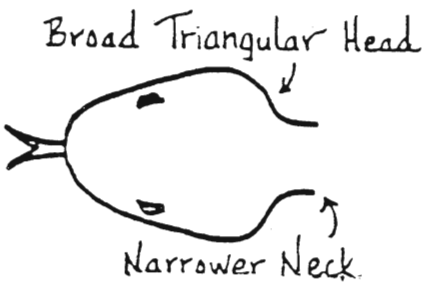
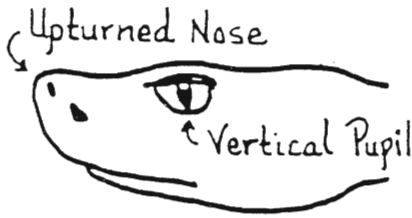


* SNAKE IDENTIFICATION *

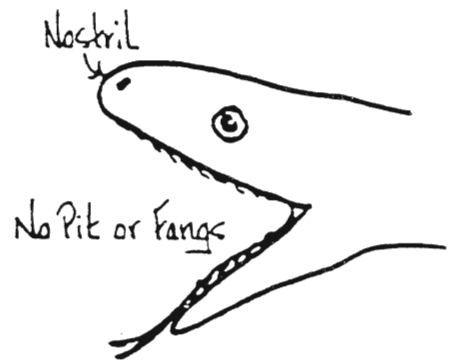
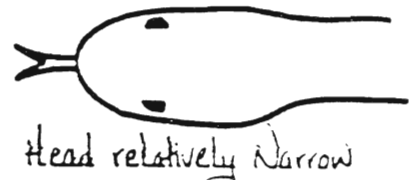
How to distinguish venomous snakes from harmless species in Southern California.

VENOMOUS

NON-VENOMOUS



Slender Body



Tail tapered or blunt, but no rattles.

REMEMBER: Rattlesnakes are the only* reptiles native to southern California which are considered dangerous to humans. The Western Rattlesnake (locally called the Southern Pacific Rattlesnake, Crotalus viridis helleri) is common throughout the chaparral and mountain regions of Los Angeles County, and is the species most likely to be encountered outside the desert regions of the state. *Gila Monsters and Coral Snakes are not native to southern California; Lyre Snakes and Night Snakes are mildly venomous local species, considered harmless to humans.